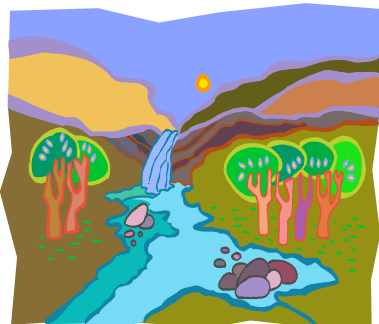


Bosque Ecosystem Monitoring Program

Volume 5, Issue 3
May 2010

Spotlight on Students.



The river and
temperatures are
on the rise!

OUR MISSION

The mission of the Bosque Ecosystem Monitoring Program (BEMP) is collaborative long-term ecological monitoring of key abiotic and biotic processes and characteristics to promote continued education, understanding and stewardship of the riparian ecosystem to scientists, teachers, students, policy makers and the public.

www.bosqueschool.org/bemp.htm
edited by: Kimi Scheerer



BOSQUE SCHOOL



scholarship • community • integrity

End of the Year Celebrations

~ BEMP Student Congress Events ~

With the end of the school year approaching and the smell and feel of summer in the air, BEMP was proud to host two end of the school-year celebrations this April.

The first event, for students grades 7-12th, was a day of BEMPin' fun and delights held in conjunction with the New Mexico Department of Game & Fish's Watershed Watch program. The Watershed Watch program, coordinated out of Santa Fe by Rich Schrader of River Source (www.riversource.net), works with students to gather data on the biological, chemical and physical indicators of local watersheds.

This day of student and professional presentations was on Thursday, April 29th at El Rancho de los Golondrinas, just south of Santa Fe. Over 260 students from: Albuquerque Institute of Math & Science, APS School on Wheels, Bernalillo High School, Bosque School, Cochiti School, Desert Academy, & Kewa (formerly Santo Domingo) Middle School presented to each other what they had accomplished throughout their year of field work. In addition, they also got to visit with El Rancho de los Golondrinas historians, Katherine Eagleson with the Wildlife Center, New Mexico Museum of Natural History and Science climate change educator Eileen Everett and our very own BEMP and Watershed Watch staff at a pond macro-invertebrate station.



Above: Katherine Eagleson with the Wildlife Center in Espanola teaches students about the awesome adaptations of aves with a beautiful barred owl.

Below: Elaine Smith's 7th grade science students from Kewa (formerly Santo Domingo) Middle School present their BEMP activities to other students.



EL RANCHO DE LAS GOLONDRINAS
A LIVING HISTORY MUSEUM

Continued on next page...

End of the year Celebrations continued...

The festivities continued on Friday, April 30th with a K-6th grade celebration. This congress event, hosted at Bosque School, included over 300 students from: Albuquerque Roots & Shoots, Bandelier Elementary, Bosque School, Cottonwood Valley Charter School (Socorro), Dolores Gonzales Elementary, Ohkay Owingeh Community School, and Rio Grande Elementary (Belen). With a special lunch-time song from Dolores Gonzales Elementary 4th graders and a snazzy newsletter created by Mary Erwin's 3rd grade Bandelier Elementary students, BEMPer's enjoyed a pizza picnic and educational activities. Students rotated around various stations learning about animal adaptations, wildlife tracking & trapping methods, how a tree is built, flow dynamics of the middle Rio Grande valley, a BEMP art project and data interpretation with BEMP Co-Coordinator Dr. Kim Eichhorst.

A special **THANKS** to our presenters from: Avian Ambassadors



New Mexico Herpetological Society

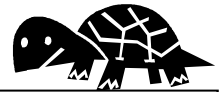
Bosque School Wildlife Biology & Conservation class

City of Albuquerque Biopark – Zoo to You program

City of Albuquerque Open Space Division

New Mexico State Forestry

Roots & Shoots



Above: Students enjoy learning about animal adaptations with the City of Albuquerque's Zoo to You program.

Right: A special highlight was the prickly hedgehog that had kids giggling all day!

Far Right: Students enjoyed getting their hands wet AND learning about our river valley with the Rolling River display, courtesy of New Mexico State Forestry.



Save the Date for Next Year's Congress events...

April 28th & 29th, 2011



Above: Dolores Gonzales Elementary students sing a beautiful song about the bosque at lunchtime.

Right: Students check out track tracks, scat and skulls at the City of Albuquerque Open Space table.

Far Right: Each student at the Congress traced their handprint on the letters B-E-M-P at our Helping Hands art station.



This 2009-2010 School Year

4,124

...students, teachers, community members, college interns, research partners, parents, agency professionals, festival goers, tribal representatives & government leaders... have been

BEMPin' it Up!



Spotlight on Schools: Community Gardens

By: BEMP Field Coordinator, Jen Schuetz

BEMP's very own *Mary Erwin*, Rio Grande Nature Center BEMP site representative, her students and their *community garden* at **Bandelier Elementary** have been featured in a really cool episode of **New Mexico in Focus** on KNME! The episode (#339, aired on April 23rd, 2010) focuses on the 40th anniversary of Earth Day.

You can view it online at:

www.newmexicoinfocus.org/watch.php?v=2010-04-23_IF_339&bw=11213

Specifically, Mary and her student's part starts 11 minutes in and runs through 16 minutes, but the whole episode is really awesome to watch... *Yay Mary!* After Mary's feature, UNM Biology professor Dr. Bruce Milne, participates in a panel discussion about growing and eating local food... take a moment and check it out. ☺



On Wednesday, April 21st, the Albuquerque Roots & Shoots BEMP group joined our Field Coordinator Jen Schuetz and braved flood waters to collect their data at the Harrison site. At the highest point, flood waters were up to adults' knees (for kids, it depended on their height)! Jen stated that although it was extra muddy they had fun wearing boots and tromping about on their scientific mission!



Top Left: Building garden boxes on the Bandelier school campus.
Top Right: Students make salad from their produce.
Left: The gardens were started by turning over the soil and planting seeds.

Photos by: Mary Erwin



CONGRATULATIONS



To BEMP Co-Director and Bosque School Wildlife Biology & Conservation teacher Dan Shaw!!! While on his annual trek to the New Mexico & Arizona Wildlife Society/American Fisheries Society joint conference, held in Flagstaff, Arizona this year from February 4-6th, Dan received the **New Mexico Chapter of the Wildlife Society's 2010 Wildlife Professional of the Year** award! Each year Dan takes a handful of High School students that present original research on a variety of wildlife and watershed topics. This year not only did Dan win an award but so did two of his students. Krystal Melendez and Sarah Silverblatt-Buser took a first place for the American Fisheries Society technical poster competition in the student category (competing against college students none-the-less)!

NOTES...

Albuquerque, NM

from the field!

During this past school year, students from Van Buren Middle School's MESA program and Zia Elementary have monitored the Badger BEMP site on alternate months. However, on Thursday, April 22nd, students from both schools and their teachers Tammy



Dunham (Van Buren) and Sara Van Note (Zia) teamed up to collect data and participate in science activities.

The students are shown here at the Badger BEMP site!

Participating Schools & Student Groups

Albuquerque Biopark	Horizon Academy
Abq. Institute of Math & Science	John Baker Elementary
Albuquerque Talent Development	John F. Kennedy Middle School
Bandelier Elementary	Kewa Middle School
Bernalillo Middle & High School	Kewa Pueblo
Bosque Farms Elementary	La Academia Esperanza
Bosque School	La Cueva High School
Cottonwood Valley Charter School	Los Lunas High School
Dolores Gonzales Elementary	Mountain Mahogany
Duranes Elementary	NM Museum – Young Explorers
East Mountain High School	North Star Elementary
Escuela Luz de Mundo	Ohkay Owingeh Comm School
Gallup Middle School	Pueblo of Santa Ana
Georgia O'Keeffe Elementary	Rio Grande Elementary
Harrison Middle School	School on Wheels Alternative HS
Holy Ghost Catholic School	Sevilleta National Wildlife Refuge
Hoover Middle School	Van Buren Middle School
Hope Christian School	Zia Elementary

New Mexico Watershed Watch / BEMP Partners:

Cimarron High School, Cochiti School, East Mountain High School & United World College



IMPORTANT DATES

June 12th – National Get OUTDOORS Day!

June 15th – BEMP monthly monitoring

June 21- 25th – BEMP pitfall trapping

July 20th – BEMP monthly monitoring

July 23-25th – Snakes, Lizards, Frogs, Turtles Workshop...

Combining Field Research, Your Students & Citizen Science

Sponsored by the NM Dept. of Game & Fish

Where: Wind River Ranch on the Mora River



For More Info, contact: Kevin Holladay at 505.476.8095 or kevin.holladay@state.nm.us



Earth/Otter Day Celebration

~ Thursday, April 22nd ~

By: BEMP Grant Administrator, Colleen Seager

This years Otter Day, sponsored by Earth's Birthday Project, Albuquerque Community Foundation and the Cebrin Goodman Foundation, was the best yet! Bosque School and BEMP hosted the 3rd annual day of otter education and fun with over 380 kindergarten and first graders from four different Albuquerque Public Schools.

Students learned about the New Mexico Department of Game & Fish's reintroduction of the river otter into the Rio Grande. They also took part in activities that showed what they can do to improve habitat in the middle Rio Grande for creatures like the river otter.

Bosque School's Wildlife Biology & Conservation class and 7th grade science students helped teach the visiting students from Emerson, S.Y. Jackson, North Star and Mitchell Elementary!

THANK YOU

to those that sponsor the BEMP program

Albuquerque Community Foundation ♦ Bernalillo County ♦ Bosque School ♦ Captain Planet Foundation, Inc. ♦ Educational Foundation of America ♦ Goodman Family ♦ McKee/Crawford Foundation ♦ Messengers of Healing Winds Foundation ♦ Middle Rio Grande Bosque Initiative/U.S. Fish and Wildlife Service ♦ Middle Rio Grande Conservancy District ♦ National Science Foundation's Schoolyard Education Program at UNM's Sevilleta Long Term Ecological Research Site ♦ New Mexico Association of Soil & Water Conservation Districts ♦ New Mexico Forest & Watershed Institute at Highlands University ♦ PNM Inc. ♦ Sandoval County ♦ U.S. Army Corps of Engineers ♦ U.S. Bureau of Reclamation ♦ USDA Forest Service ♦ Wal-Mart Foundation ♦ 7 Bar Foundation